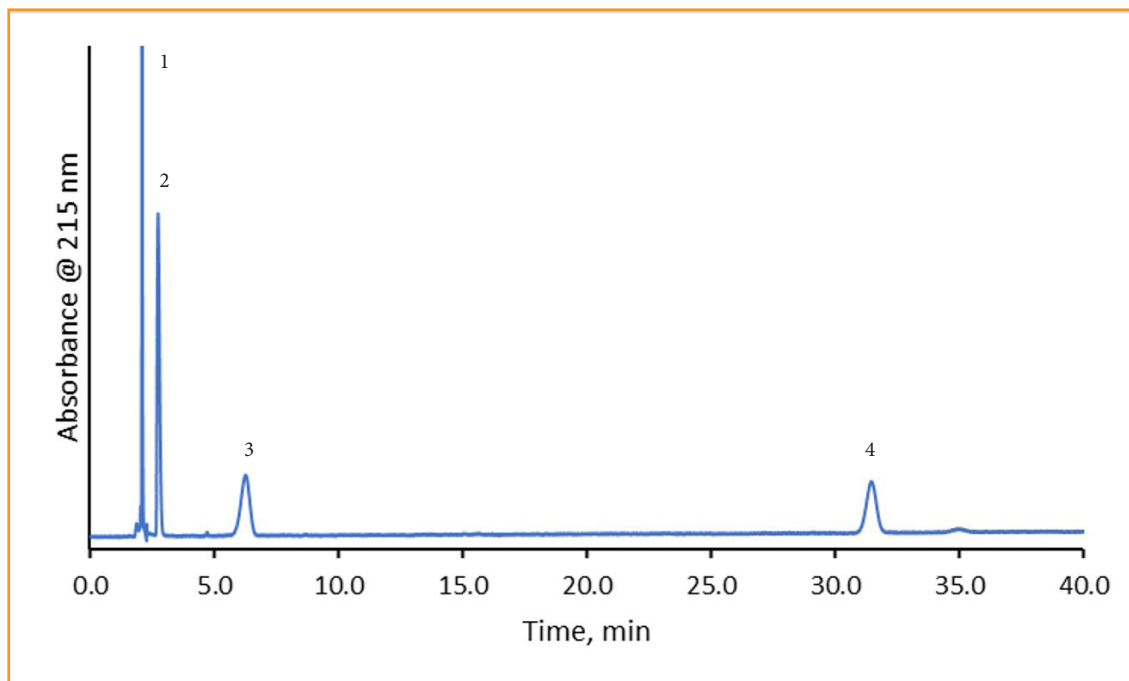




Enalapril Maleate According to Chinese Pharmacopoeia (CP)

267-CP



TEST CONDITIONS:

Column: HALO 90 Å C8, 5 µm, 4.6 x 250 mm
Part Number: 95814-908
Mobile Phase A: 10mM Phosphate buffer pH: 2.2
Mobile Phase B: Acetonitrile
Isocratic: 25% B
Flow Rate: 1.0 mL/min
Back Pressure: 137 bar
Temperature: 50 °C
Detection: UV: 215 nm
Injection Volume: 20 µL
Sample Solvent: mobile phase
Data Rate: 100 Hz
Response Time: 0.025 sec.
Flow Cell: 1 µL
LC System: Shimadzu Nexera X2

PEAK IDENTITIES

1. Maleic Acid
2. Enalaprilat (Impurity I)
3. Enalapril
4. Enalapril Diketopiperazine (Impurity II)

Enalapril is used to treat high blood pressure. A separation of enalapril along with its impurities is separated on a HALO® C8 column following the Chinese Pharmacopoeia method. High resolution along with low tailing factors are achieved.

