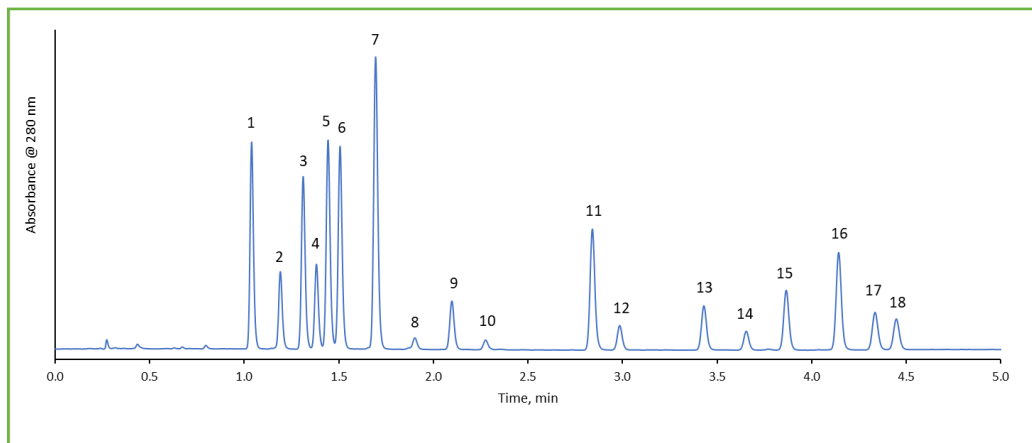




Separation of 16 PAH Compounds Specified in EPA 610 + 2 additional PAH Compounds using HALO® PAH

229-P



PEAK IDENTITIES

1. Naphthalene
2. Acenaphthylene
3. 1-methylnaphthalene
4. 2-methylnaphthalene
5. Acenaphthene
6. Fluorene
7. Phenanthrene
8. Anthracene
9. Fluoranthene
10. Pyrene
11. Benzo(a)anthracene
12. Chrysene
13. Benzo[b]fluoranthene
14. Benzo[k]fluoranthene
15. Benzo[a]pyrene
16. Dibenzo[a,h]anthracene
17. Benzo[g,h,i]perylene
18. Indeno[1,2,3-cd]pyrene

TEST CONDITIONS:

Column: HALO 90 Å PAH, 2.7 µm, 4.6 x 50 mm

Part Number: 92844-412

Mobile Phase A: Water

B: Acetonitrile

Gradient:	Time	%B
	0.0	50
	4.0	100
	5.0	100
	5.01	50

Flow Rate: 1.8 mL/min

Pressure: 256 bar

Temperature: 30 °C

Detection: 280 nm

Injection Volume: 2 µL

Sample Solvent: Methanol

Data Rate: 100 Hz

Response Time: 0.025 sec

Flow Cell: 1 µL

LC System: Shimadzu Nexera

Polycyclic Aromatic Hydrocarbons (PAHs) are a group of more than 100 chemicals released from the combustion of coal, oil, gasoline, tobacco, and wood. They can also be found in cooked food. PAHs are persistent chemicals and must be closely regulated for early detection/monitoring to minimize hazardous exposure in the environment and/or use of contaminated raw materials in different industries. A rapid separation of the 16 compounds specified in EPA 610 and an additional 2 PAH compounds that are regularly analyzed is demonstrated on the HALO® PAH column showing excellent speed and resolution.

