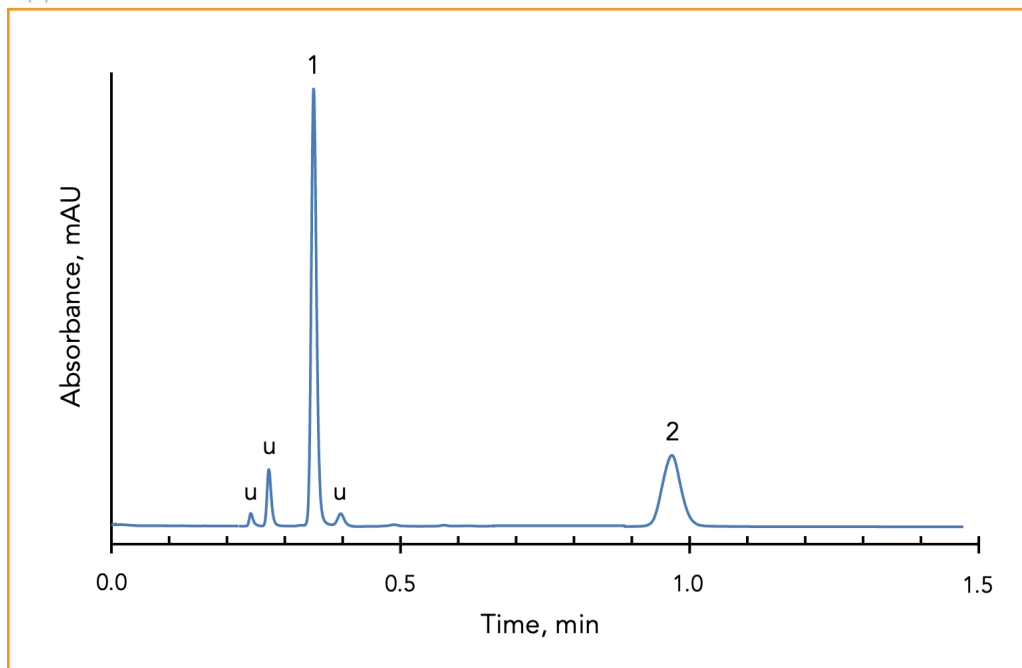




Separation of Galantamine and Quetiapine on HALO® PFP

Application Note 85-PS



PEAK IDENTITIES:

1. Galantamine
 2. Quetiapine
- u = unknown

Galantamine and quetiapine are psychiatric drugs used to treat mental disorders. They can be rapidly separated on a HALO® PFP column in just one minute.

TEST CONDITIONS:

Column: HALO 90 Å PFP, 2.7 µm,
4.6 x 50 mm

Part Number: 92814-409

Mobile Phase: 58/42 - A/B

A: 0.02 M potassium phosphate, pH 3.0

B: Acetonitrile

Flow Rate: 1.8 mL/min

Pressure: 155 bar

Temperature: 40 °C

Detection: UV 220 nm, VWD

Injection Volume: 0.5 µL

Sample Solvent: Methanol

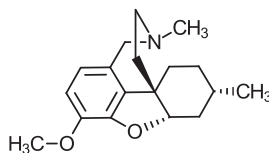
Response Time: 0.02 sec

Flow Cell: 2.5 µL semi-micro

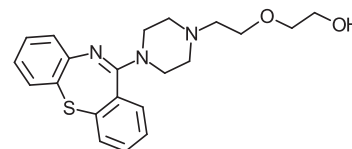
LC System: Shimadzu Prominence UFLC XR

Extra column volume: ~14 µL

STRUCTURES:



Galantamine



Quetiapine

