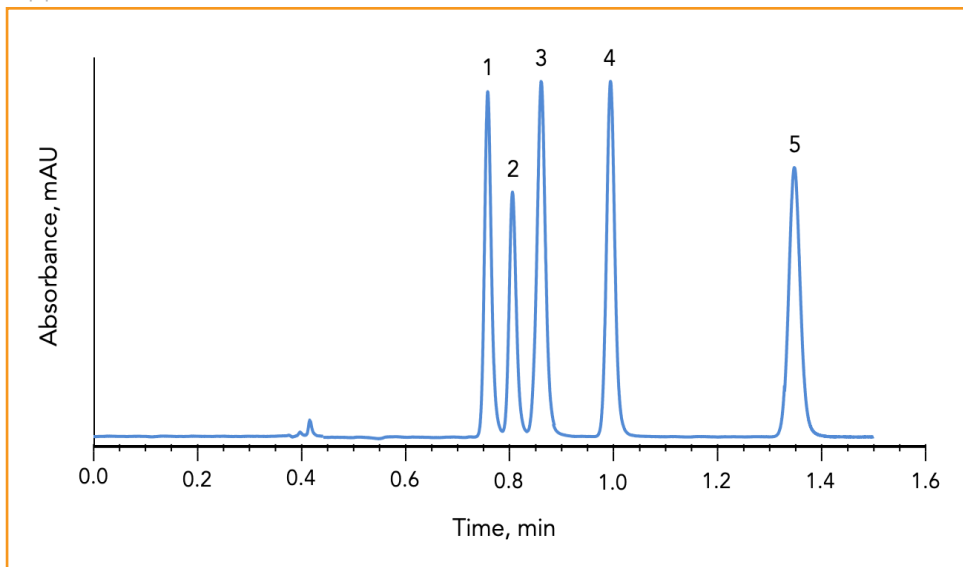




Separation of Antidepressants on HALO® Penta-HILIC Stationary Phase

Application Note 67-AD



PEAK IDENTITIES:

1. Trimipramine
2. Amitriptyline
3. Doxepin
4. Nortriptyline
5. Amoxapine

Basic drugs such as antidepressants can be rapidly separated under HILIC conditions with good peak shape using HALO® Penta-HILIC stationary phase.

TEST CONDITIONS:

Column: HALO 90 Å Penta-HILIC, 2.7 µm,
4.6 x 100 mm

Part Number: 92814-605

Mobile Phase: 7/93 - A/B

A: 0.1 M ammonium formate, pH 3.5

B: Acetonitrile

Flow Rate: 2.5 mL/min

Pressure: 165 bar

Temperature: 30 °C

Detection: UV 254 nm, VWD

Injection Volume: 0.5 µL

Sample Solvent: 10/90 water/acetonitrile

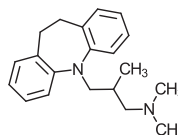
Response Time: 0.02 sec

Flow Cell: 2.5 µL semi-micro

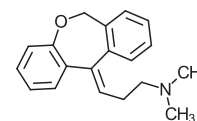
LC System: Shimadzu Prominence UFLC XR

Extra column volume: ~14 µL

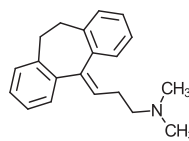
STRUCTURES:



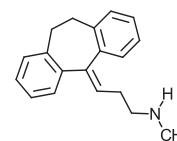
Trimipramine



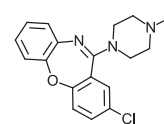
Doxepin



Amitriptyline



Nortriptyline



Amoxapine

